



India Meteorological Department  
(Ministry of Earth Sciences)

NATIONAL BULLETIN NO. 49 (LAND/02/2024)

TIME OF ISSUE: 1230 HOURS IST

DATED: 02.09.2024

FROM: INDIA METEOROLOGICAL DEPARTMENT (FAX NO. 24643965/24699216/24623220)

TO: CONTROL ROOM, NDM, MINISTRY OF HOME AFFAIRS (FAX.NO. 23093750)  
CONTROL ROOM NDMA (FAX.NO. 26701729)  
CABINET SECRETARIAT (FAX.NO.23012284, 23018638)  
PS TO HON'BLE MINISTER FOR S & T AND EARTH SCIENCES (FAX NO.23316745)  
SECRETARY, MOES (FAX NO. 24629777)  
H.Q. (INTEGRATED DEFENCE STAFF AND CDS) (FAX NO. 23005137/23005147)  
DIRECTOR GENERAL, DOORDARSHAN (23385843)  
DIRECTOR GENERAL, AIR (23421105, 23421219)  
PIB MOES (FAX NO. 23389042)  
UNI (FAX NO. 23355841)  
D.G. NATIONAL DISASTER RESPONSE FORCE (NDRF) (FAX NO. 26105912, 2436 3260)  
DIRECTOR, PUNCTUALITY, INDIAN RAILWAYS (FAX NO. 23388503)  
CHIEF SECRETARY, RAJASTHAN (FAX NO. 0141-2227114)  
CHIEF SECRETARY, ANDHRA PRADESH (FAX NO. 0863-2441029)  
CHIEF SECRETARY, TELANGANA (FAX NO. 040-23453700)  
CHIEF SECRETARY, MAHARASHTRA (FAX NO. 022- 22028594)  
CHIEF SECRETARY, GUJARAT (FAX NO. 079-23250305)  
CHIEF SECRETARY, DAMAN & DIU (FAX NO. 0260-2230775)  
CHIEF SECRETARY, DADRA & NAGAR HAVELI (FAX NO. 0260-2645466)  
CHIEF SECRETARY, GOA (FAX NO. 0832-2415201)

**Sub: (a) Depression (Remnant of Cyclonic Storm "ASNA") over northwest Arabian Sea and (b) Depression over East Vidarbha and adjoining Telangana**

**(a) Depression (Remnant of Cyclonic Storm "ASNA") over northwest Arabian Sea**

The Depression (Remnant of Cyclonic Storm "ASNA") over northwest Arabian Sea moved south-southwestwards with a speed of 12 kmph during past 6 hours and lay centered at 0830 hours IST of today, the 02<sup>nd</sup> September, 2024 over the same region near latitude 20.9°N and longitude 61.2°E, about 210 km southeast of Ras Al Hadd (Oman) and 420 km southeast of Muscat (Oman).

It is likely to continue to move further south-southwestwards over northwest Arabian Sea and weaken gradually into a well marked low pressure area over the same region during next 6 hours.

**Warnings:**

**(i) Wind warning:**

- Squally wind speed reaching 45-55 kmph gusting to 65 kmph is likely to prevail over northwest Arabian Sea till noon of 2<sup>nd</sup> September.
- Squally wind speed reaching 40-50 kmph gusting to 60 kmph is likely to prevail over central Arabian Sea till noon of 2<sup>nd</sup> September.

**(ii) Sea condition:**

- Rough Sea condition is likely to prevail over northwest adjoining westcentral Arabian Sea till noon of 2<sup>nd</sup> September and improve thereafter.

**(iii) Fishermen warning:**

Fishermen are advised not venture into Northwest Arabian Sea and adjoining westcentral Arabian Sea till noon of 2<sup>nd</sup> September.

**(b) Depression over East Vidarbha and adjoining Telangana**

The depression over East Vidarbha and adjoining Telangana moved northwestwards with a speed of 8 kmph during the past 6 hours and lay centered at 0830 hours IST of 02<sup>nd</sup> September, 2024 over the same region near latitude 19.8°N and longitude 79.9°E, about 70 km east-southeast of Chandrapur (Maharashtra), 90 km south of Bramhapuri (Maharashtra), 130 km north-northeast of Ramagundam (Telangana), and 170 km southeast of Wardha (Maharashtra).

It is likely to move nearly northwestwards across Vidarbha and weaken into a well marked low pressure area during next 12 hours.

**Warnings:**

**(i) Rainfall Warning:**

**Gujarat region:** Light to moderate rainfall at most places with very heavy to extremely heavy rainfall at isolated places on 2<sup>st</sup> and 3<sup>rd</sup> September.

**Madhya Maharashtra:** Light to moderate rainfall at most places with very heavy to extremely heavy rainfall at isolated places on 2<sup>nd</sup> September and isolated heavy rainfall on 3<sup>rd</sup> September.

**Marathwada:** Light to moderate rainfall at most places with heavy to very heavy rainfall at isolated places on 2<sup>nd</sup> September.

**Vidarbha:** Light to moderate rainfall at most places with isolated heavy to very heavy rainfall at a few places on 2<sup>nd</sup> September and isolated heavy rainfall on 3<sup>rd</sup> September.

**East Madhya Pradesh:** Light to moderate rainfall at most places with heavy rainfall at isolated places is likely on 2<sup>nd</sup> September.

**West Madhya Pradesh:** Light to moderate rainfall at most places with heavy to very heavy rainfall at isolated places on 2<sup>nd</sup> and 3<sup>rd</sup> September.

**East Rajasthan:** Light to moderate rainfall at most places with heavy rainfall at isolated places on 2<sup>nd</sup> September.

**Telangana:** Light to moderate rainfall at most places with isolated heavy rainfall over north Telangana on 2<sup>nd</sup> September.

**Saurashtra & Kachchh:** Light to moderate rainfall at most places with heavy rainfall at isolated places on 2<sup>st</sup> and very heavy rainfall on 3<sup>rd</sup> September.

**(ii) Wind warning:**

- Squally weather with wind speed reaching 35-45 kmph gusting to 55 kmph is likely over Vidarbha adjoining Telangana & Marathwada and during next 12 hours.

**(v) Flash Flood Guidance:**

**❖ 24 hours Outlook for the Flash Flood Risk (FFR) till 0530 IST of 03-09-2024 :**

Low to Moderate flash flood risk likely over few watersheds & neighbourhoods of following Met Sub-divisions during next 24 hours.

**Telangana** - Nirmal, Nizamabad, Jagital, Peddapalle, Mancherial, Kamreddy, Sangareddy, Medak, Adilabad and Kumarabheen Asifabad districts.

**Vidarbha** – Nagpur, Akola, Wardha, Washim, Buldhana, Amravari, Chandrapur and Yavatmal districts.

**Marathwada** – Parbhani, Hingoli, Osmanabad, Latur, Bid and Nanded districts.

**Gujarat Region** – Valsad, Tapi, Dahod, Mahisagar, Aravalli, Sagarkantha, Navsari, Surat, Narmada, Bharuch, Vadodra & Panchmahal districts.

**West Madhya Pradesh** – Jhabua, Alirajpur, Barwani, Mandsaur, Khargone, Dhar, Indore, Ratlam, Ujjain, Khandwa, Dewas, Sehore, Shajapur & Agar Malwa districts.

❖ **Impact Expected (Vidarbha, Telangana, Marathwada, Madhya Maharashtra, Madhya Pradesh, Gujarat state and East Rajasthan)**

- Localized Flooding of roads, water logging in low lying areas and closure of underpasses mainly in urban areas of the above region.
- Breaking of tree branches.
- Occasional reduction in visibility due to heavy rainfall.
- Reduction of visibility over sea area due to sea spray induced by strong wind and heavy rainfall.
- Disruption of traffic in major cities due to water logging in roads leading to increased travel time.
- Minor damage to kutcha roads.
- Possibilities of damage to vulnerable structure.
- Localized Landslides/Mudslides/landslips/mud slips/land sinks/mud sinks.
- Damage to horticulture and standing crops in some areas due to inundation.
- It may lead to riverine flooding in some river catchments (for riverine flooding please visit Web page of CWC)

❖ **Action Suggested**

- Fishermen are advised not venture into
  - Northwest Arabian Sea and adjoining westcentral Arabian Sea till noon of 2<sup>nd</sup> September.
- Judicious regulation of offshore/onshore Operations
- Judicious regulation of surface transports including railways and roadways.
- Check for traffic congestion on your route before leaving for your destination.
- Follow any traffic advisories that are issued in this regard.
- Avoid going to areas that face the water logging problems often.
- Avoid staying in vulnerable structure.

❖ **Agromet Advisories for Heavy Rainfall likely over Vidarbha, Telangana, Marathwada, Madhya Maharashtra, Madhya Pradesh, Gujarat state and East Rajasthan) due to Depression**

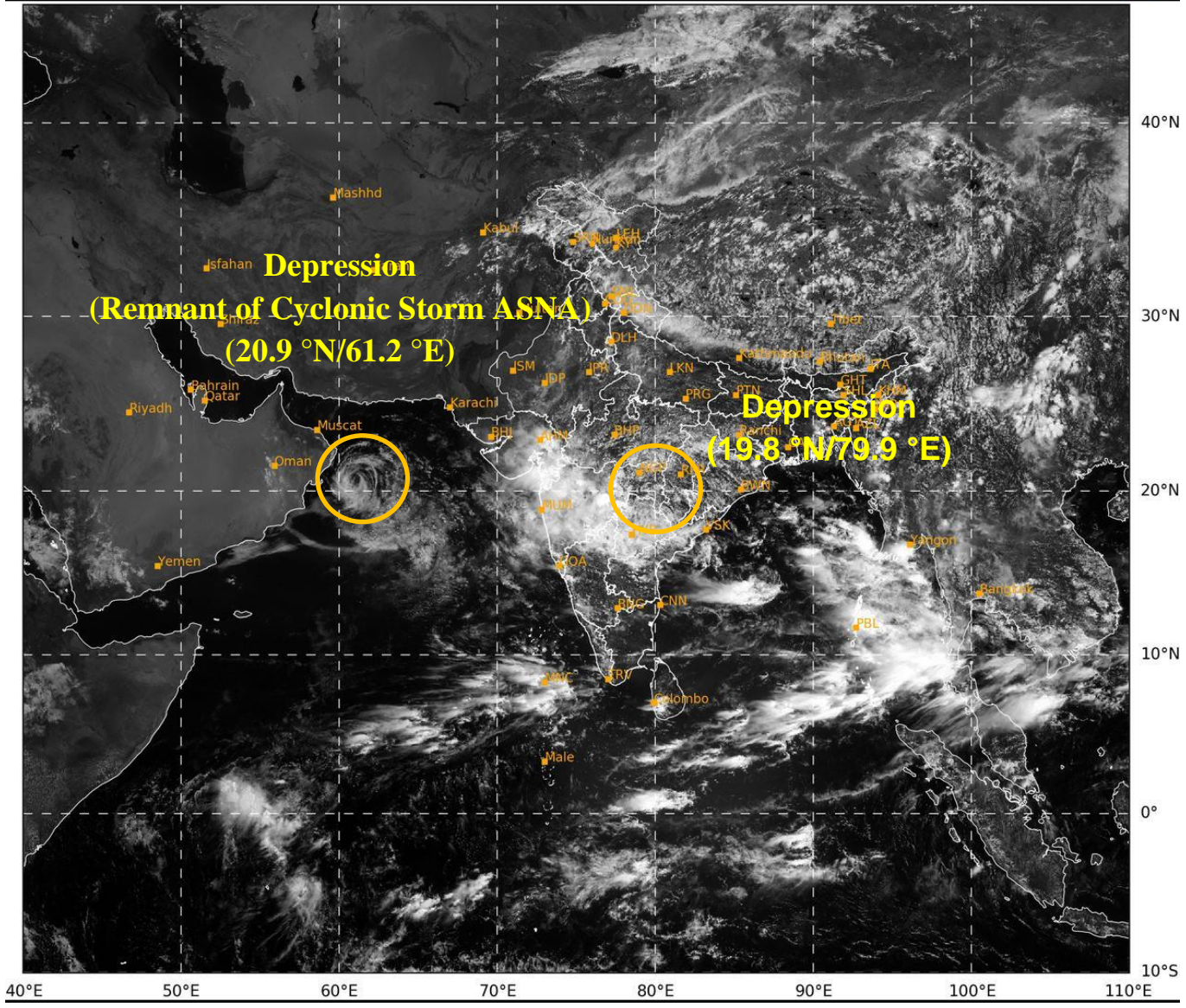
- Make provision for draining out excess water from crop fields to avoid water stagnation.
- Provide mechanical support to horticultural crops and staking to vegetables.

**Significant amount of rainfall recorded from 0830 hours IST of yesterday, 1<sup>st</sup> September to 0830 hours IST of today, the 02<sup>nd</sup> September, 2024) is given in Annexure-I.**

**Next bulletin will be issued at 1430 hours IST of today, the 2<sup>nd</sup> September, 2024.**

(Dr. Suprit Kumar)  
Scientist-E, RSMC, IMD, New Delhi

*Copy to: ACWC Kolkata/ACWC Mumbai/RMC Mumbai/CWC Ahmedabad/MC Jaipur/RMC, Nagpur/MC, Bhopal//CWC Bhubaneswar/MC, Goa/MC, Ranchi*



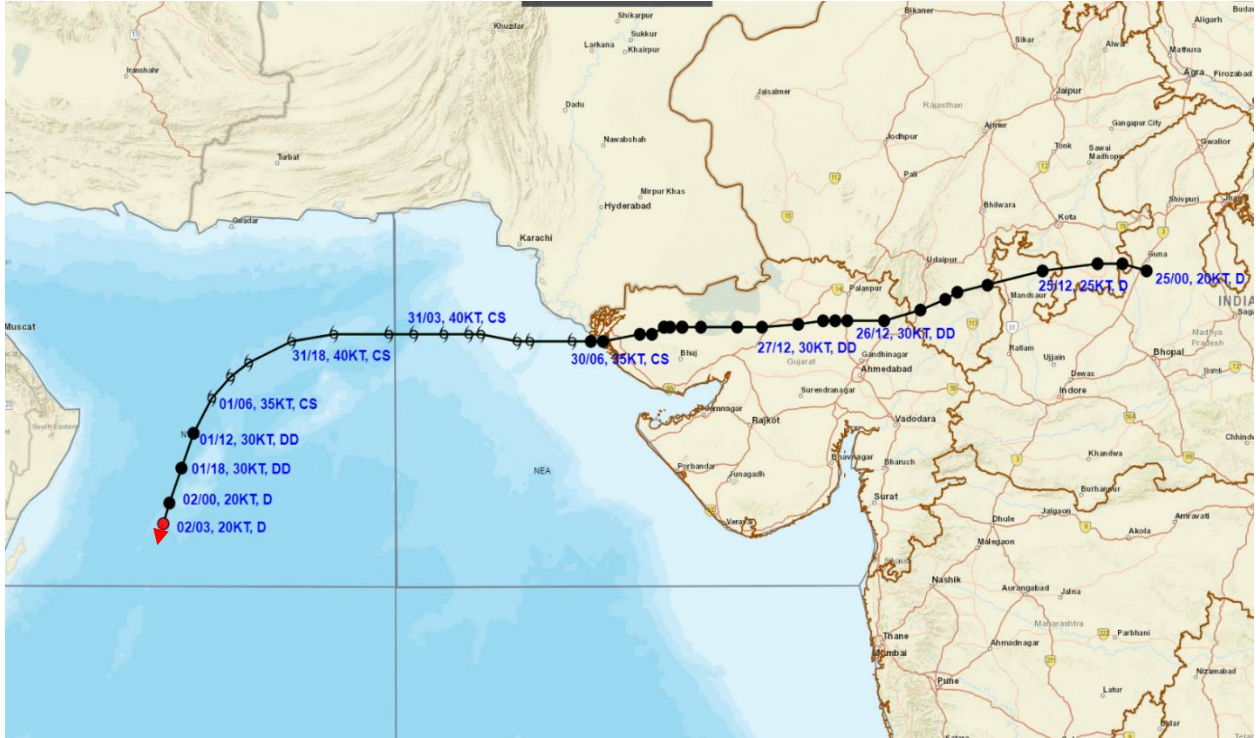
43

686

IMD, DELHI



**OBSERVED AND FORECAST TRACK OF DEPRESSION (REMNANT OF CYCLONIC STORM ASNA) OVER NORTHWEST ARABIAN SEA BASED ON 0300 UTC (0830 IST) OF 2<sup>nd</sup> SEPTEMBER, 2024.**



DATE/TIME IN UTC  
 IST=UTC + 0530  
 L: LOW PRESSURE AREA  
 WML: WELL MARKED LOW PRESSURE AREA  
 D: DEPRESSION (17-27 KT)  
 DD: DEEP DEPRESSION (28-33 KT)  
 CS: CYCLONIC STORM (34-47 KT)  
 SCS: SEVERE CYCLONIC STORM (48-63KT)  
 VSCS: VERY SEVERE CYCLONIC STORM (64-89 KT)  
 ESCS: EXTREMELY SEVERE CYCLONIC STORM (90-119 KT)  
 SuCS: SUPER CYCLONIC STORM ( $\geq$  120 KT)

- LESS THAN 34 KT
- 34-47 KT
- $\geq$  48 KT
- OBSERVED TRACK
- FORECAST TRACK
- CONE OF UNCERTAINTY



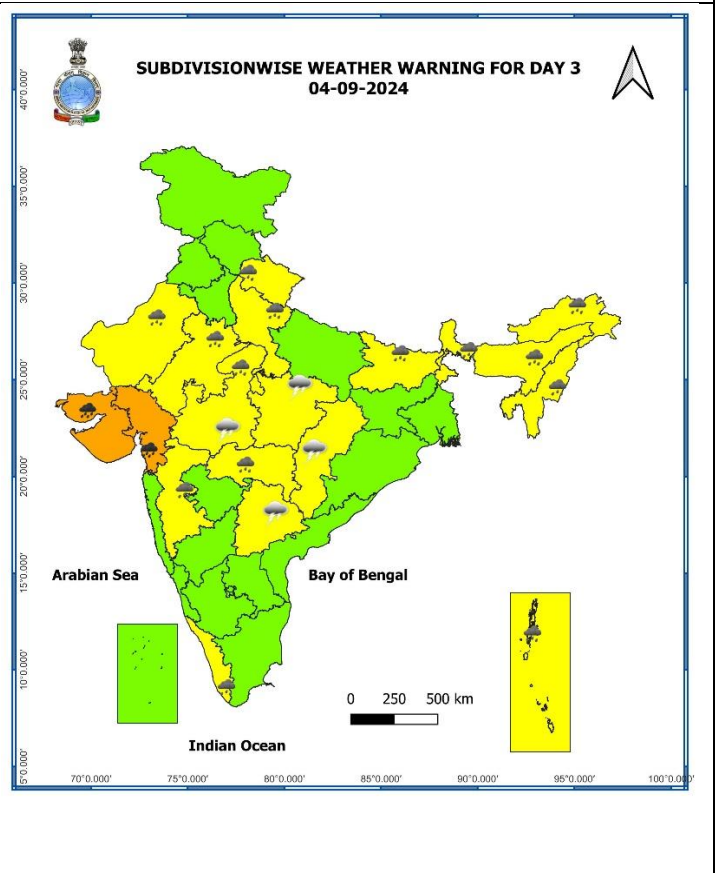
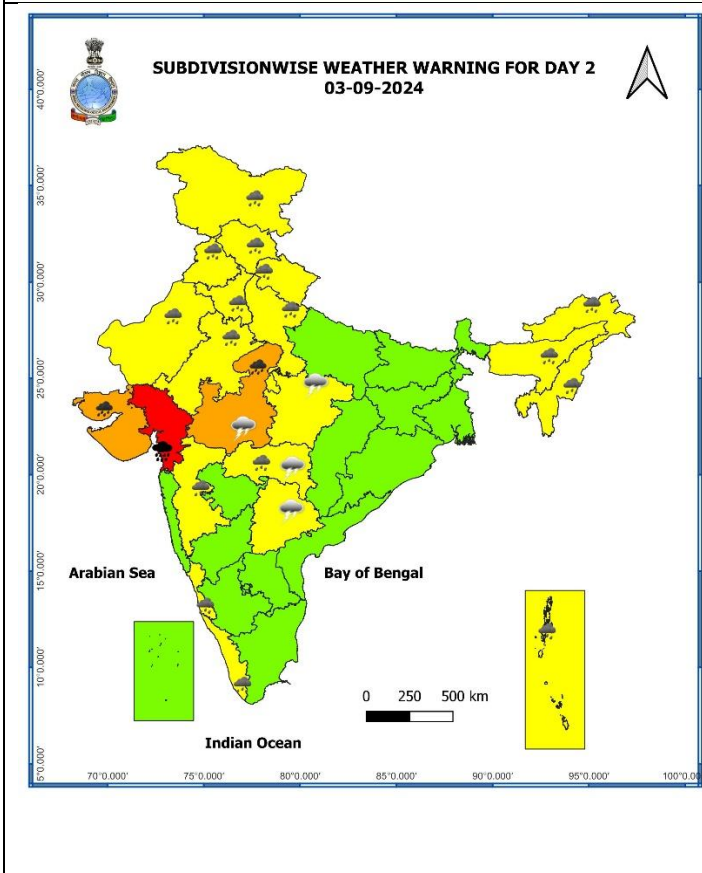
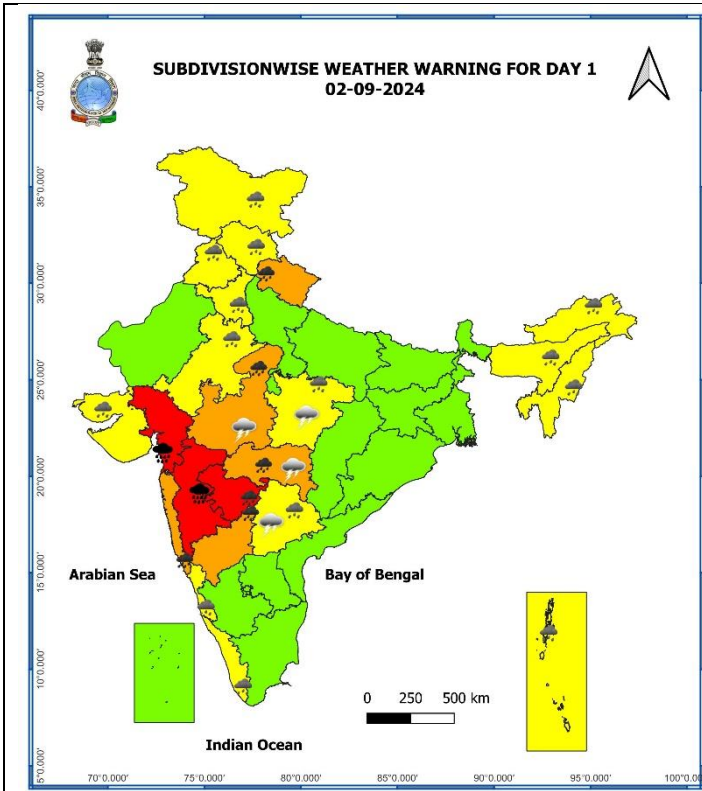
**OBSERVED AND FORECAST TRACK OF DEPRESSION OVER EAST VIDARBHA AND ADJOINING TELANGANA BASED ON 0300 UTC (0830 IST) OF 2<sup>nd</sup> SEPTEMBER, 2024.**

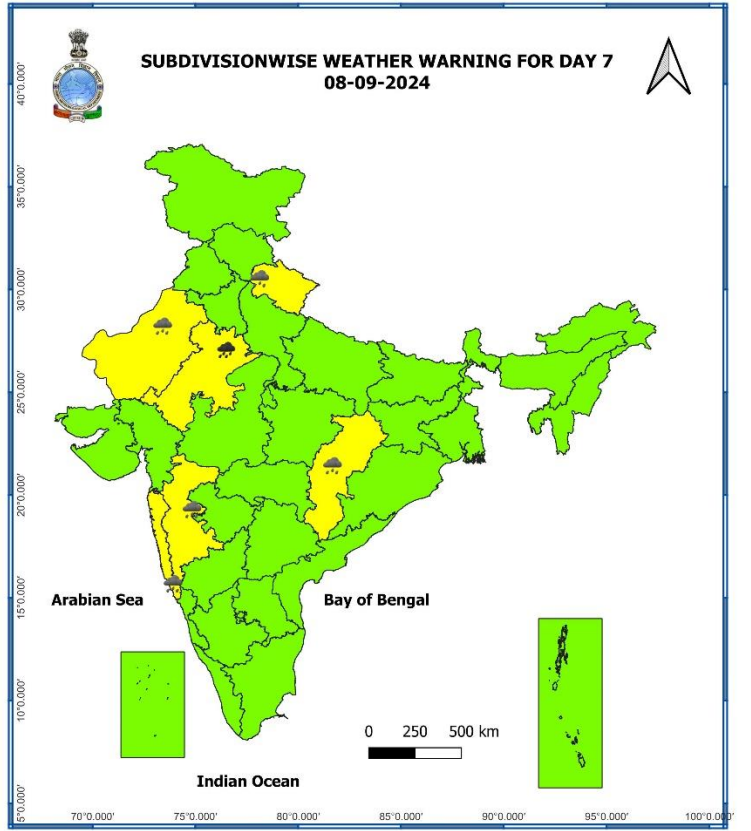
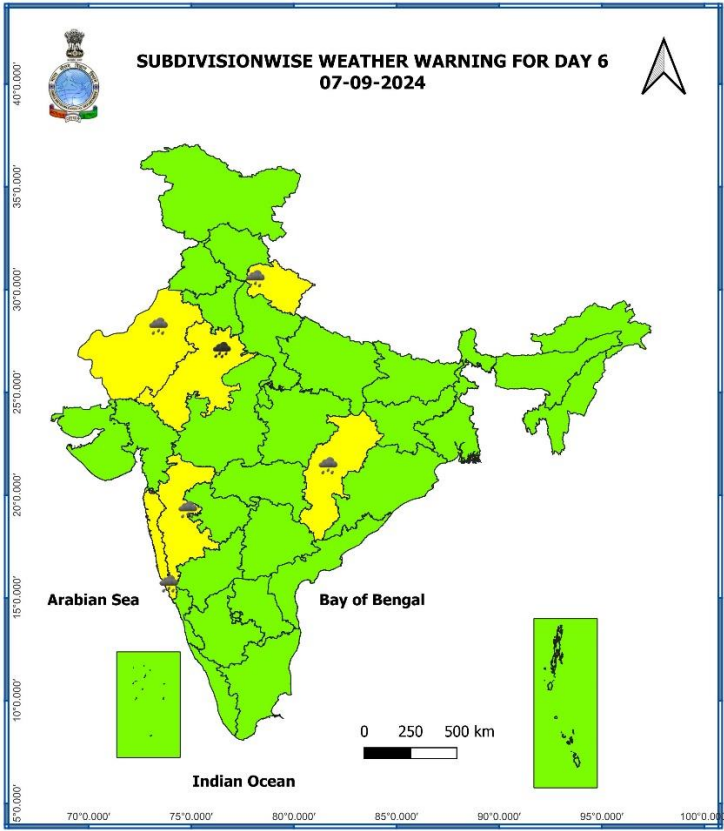
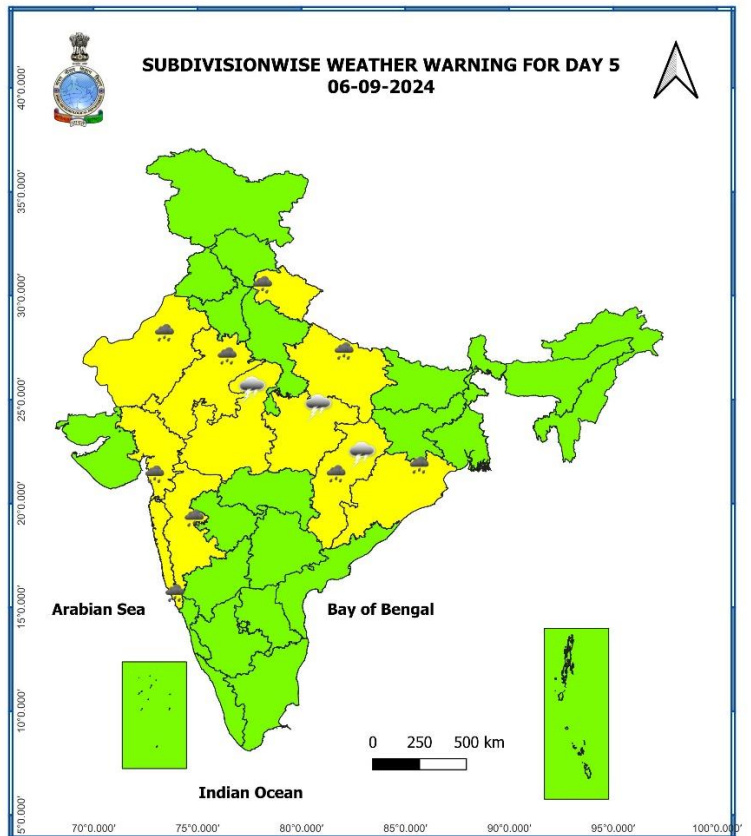
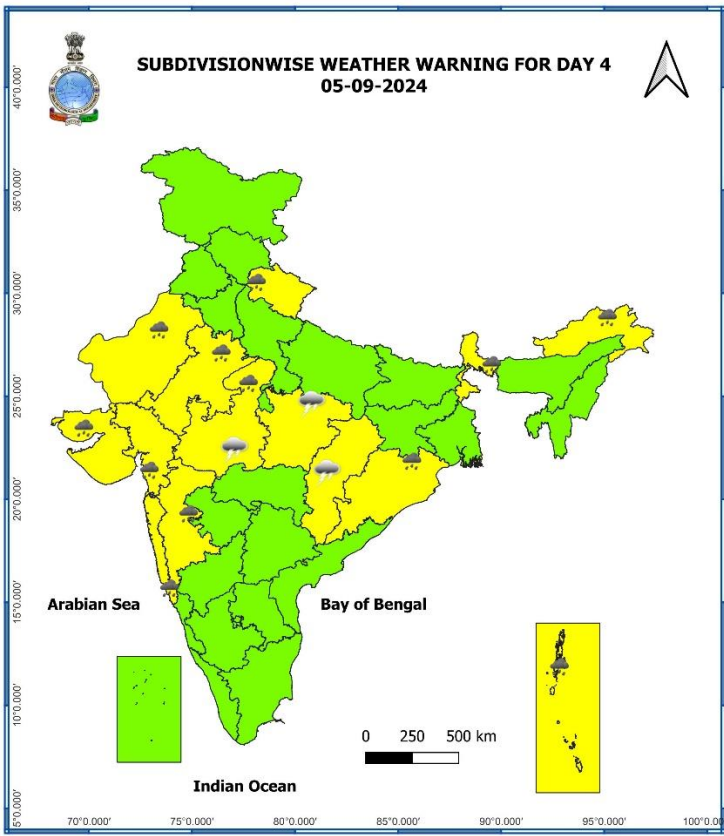


DATE/TIME IN UTC  
 IST=UTC + 0530  
 L: LOW PRESSURE AREA  
 WML: WELL MARKED LOW PRESSURE AREA  
 D: DEPRESSION (17-27 KT)  
 DD: DEEP DEPRESSION (28-33 KT)  
 CS: CYCLONIC STORM (34-47 KT)  
 SCS: SEVERE CYCLONIC STORM (48-63KT)  
 VSCS: VERY SEVERE CYCLONIC STORM (64-89 KT)  
 ESCS: EXTREMELY SEVERE CYCLONIC STORM (90-119 KT)  
 SuCS: SUPER CYCLONIC STORM ( $\geq$  120 KT)

- LESS THAN 34 KT
- 34.47 KT
- $\geq$  48 KT
- OBSERVED TRACK
- FORECAST TRACK
- CONE OF UNCERTAINTY

# Weather Warning Graphics

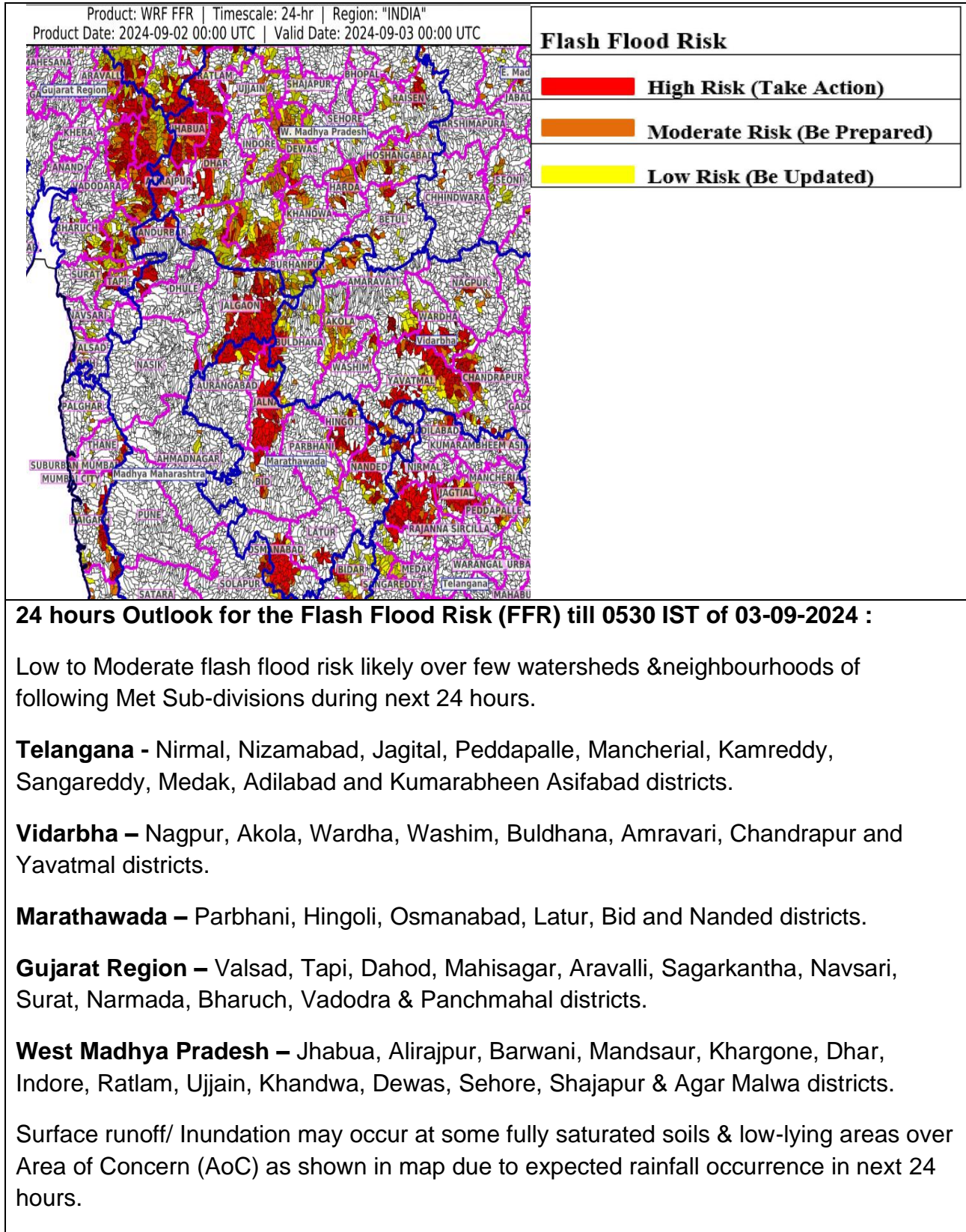




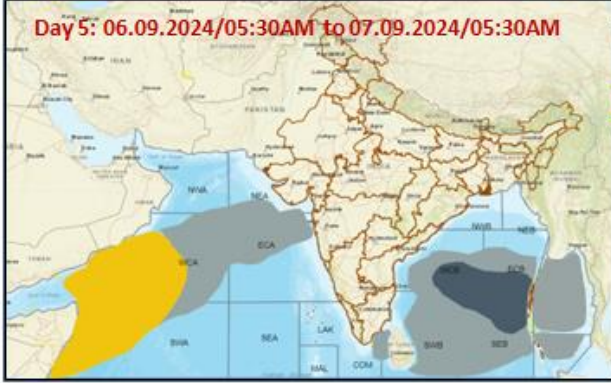
- Action may be taken based on **ORANGE AND RED** COLOUR warnings.
- Vulnerable regions likely urban and hilly areas action may be initiated for heavy rainfall warning.
- As the lead period increases forecast accuracy decreases.



## Flash Flood Guidance



**Fishermen Warning Graphics**



	Squally WX with wind speed 35-45 kmph gusting to 55 kmph
	Squally WX with wind speed 45-55 kmph gusting to 65 kmph
	Squally wind with speed 45-55 kmph gusting to 65 kmph

**Fishermen are advised not to venture into the marked areas.**

**Significant amount of rainfall recorded from 0830 hours IST of yesterday, 1<sup>st</sup> September to 0830 hours IST of today, the 02<sup>nd</sup> September, 2024 (cm):**

**Marathwada:** Manvat (Parbhani) 31, Dhalegaon - Fmo (Parbhani) 26, Mantha (Jalna) 23, Pathri (Parbhani) 23, Partur (Jalna) 22, Sonpeth (Parbhani) 20, Selu (Parbhani) 19, Ardhapur (Nanded) 19, Udgir (Latur) 16, Ambad (Jalna) 15, Nanded - Imd Parttime (Nanded) 14, Jintur (Parbhani) 13, Ghansawangi (Jalna) 13, Deoni (Latur) 13, Parbhani - Imd Obsy (Parbhani) 13, Ambejogai / Mominabad (Beed) 13, Georai (Beed) 12, Udgir - Imd Parttime (Latur) 12, Dharur (Beed) 12, Palam (Parbhani) 12, Hingoli - Hydromet (Hingoli) 11, Aundha Nagnath (Hingoli) 11, Sillod (Chh. Sambhajinagar) 11, Bhokardan (Jalna) 11, Wadawani (Beed) 10, Jalkot (Latur) 10, Kandhar (Nanded) 10, Purna (Parbhani) 10, Gangakhed (Parbhani) 9, Mudkhed (Nanded) 9, Latur (Latur) 9, Bhokar (Nanded) 9, Hadgaon (Nanded) 9, Vasmat (Hingoli) 9, Ahmedpur (Latur) 9, Washi (Dharashiv) 9, Phulambri (Chh. Sambhajinagar) 8, Badnapur (Jalna) 8, Kallamnuri (Hingoli) 8, Renapur (Latur) 8, Kaij (Beed) 8, Beed (Beed) 7, Dharmabad (Nanded) 7, Chakur (Latur) 7, Parli Vaijnath (Beed) 7, Kallamb (Dharashiv) 7, Sambhajinagar-imd Obsy (Chh. Sambhajinagar) 7, Mukhed (Nanded) 7, Mahur (Nanded) 7, Shirur Anantpal (Latur) 7, Bhum (Dharashiv) 7, Manjlegaon (Beed) 7, Paithan (Chh. Sambhajinagar) 7, Loha (Nanded) 7, Naigaon Khairgaon (Nanded) 7, Patoda (Beed) 7,

**Telangana:** Sadasivanagar (Kamareddy) 24, Tadwai (Kamareddy) 24, Lingampet (Kamareddy) 23, Kamareddy (Kamareddy) 22, Jainoor (Kumaram Bheem) 19, Papannapet (Medak) 17, Utnur (Adilabad) 17, Gandhari (Kamareddy) 17, Mirdoddi (Siddipet) 15, Yellareddy (Kamareddy) 15, Naga Reddipet (Kamareddy) 15, Gambhiraopet (Rajanna Sircilla) 15, Khanpur (Nirmal) 14, Laxmanchanda (Nirmal) 13, Dubbak (Siddipet) 13, Balkonda (Nizamabad) 12, Tekmal (Medak) 12, Metpalle (Jagtial) 12, Nirmal (Nirmal) 12, Yellareddypeta (Rajanna Sircilla) 12, Kondapak (Siddipet) 12, Mallapur (Jagtial) 12, Alladurg (Medak) 12, Dandepalle (Mancherial) 12, Kampasagar(a) (Nalgonda) 11, Sarangapur (Jagtial) 11, Bhiknur (Kamareddy) 11, Bejjanki (Siddipet) 11, Mortad (Nizamabad) 11, Banswada (Kamareddy) 11, Navipet (Nizamabad) 11, Domakonda (Kamareddy) 10, Peddapalle (Peddapalle) 10, Nanganur (Siddipet) 10, Medak (Medak) 10, Elagaid (Peddapalle) 10, Sangem (Warangal) 10, Husnabad(arg) (Siddipet) 10, Dilawarpur (Nirmal) 10, Belampalle (Mancherial) 10, Jangaon (Jangaon) 10,

**West Madhya Pradesh:** Bhagwanpura (Khargone) 13, Bhikangaon (Khargone) 13, Khargone-aws (Khargone) 10, Gogawan (Khargone) 9, New Harsud (Khandwa) 9, Khandwa (Khandwa) 7, Dabra (Gwalior) 7,

**East Rajasthan:** Jaipur Aero (Jaipur) 12, Nasirabad (Ajmer) 11, Sanganer Tehsil Sr (Jaipur) 9, Thanagazi (Alwar) 8, Bassi (Jaipur) 8, Srimadhapur (Sikar) 7, Vijaynagar Sr (Ajmer) 7,

**Gujarat Region:** Waghai (Dangs) 11, Bodeli (Chhota Udepur) 7,

**Madhya Maharashtra:** Pathardi (Ahmednagar) 9,

**West Rajasthan:** Nawa (Nagaur) 7,

**Vidarbha:** Pusad (Yeotmal) 10, Digras (Yeotmal) 7,